



Continental Shelf Associates

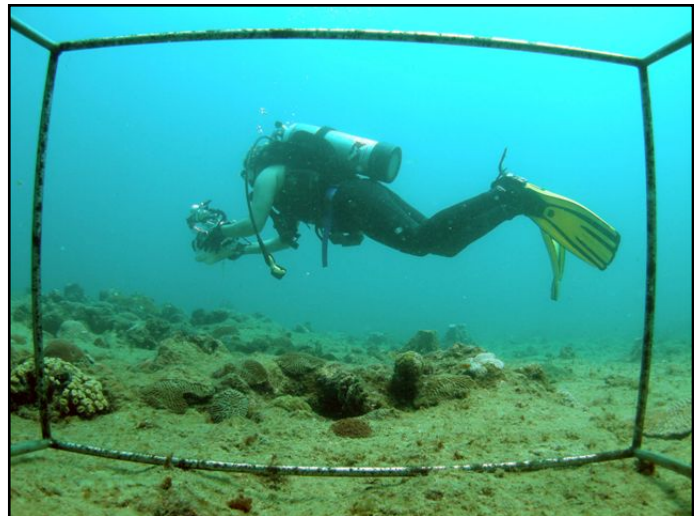
8502 S.W. Kansas Ave.
Stuart, FL 34997

T 772.219.3000 F 772.219.3010
E csa@conshelf.com W www.csaintl.com

Continental Shelf Associates committed to restoring marine habitats around the world

More than anything else, the recent oil spill in the Gulf of Mexico reminded the world how fragile the marine ecosystems that we rely on for income, food, recreation, and energy really are. One company that hasn't needed reminding is Continental Shelf Associates, a Martin County company with years of experience conducting impact assessments and supervising the eventual restoration of natural habitats.

Established in 1970, Continental Shelf is the parent company for several businesses focused on the ocean industry. CSA International, Inc., its largest division, is a consulting firm that specializes in marine sciences and services, such as ecological consulting, coral reef and seagrass restoration, environmental impact studies and more. Ocean Specialists, Inc., a marine consulting company with a slightly different focus, specializes in the development, design and installation of submarine fiber optic systems around the world and is involved a number of subsea projects. The third sister-company, Technol-



CSA scientist collecting qualitative video transect data as part of coral community monitoring for the 301(h) monitoring program for the Carolina Regional Waste Water Treatment Plant (RWWTP) offshore Carolina, Puerto Rico.

ogy Systems Corporation, is a publishing entity that prints trade magazines, manages conferences and exhibitions, and sells industry-related products through its Sea Catalog online store.

CSA International is headquartered in Stuart, Florida, with regional offices in Tampa, Florida; Salinas, California; Houston, Texas; Port of Spain, Trinidad; and Doha, Qatar. Clients include the oil and gas industry, engineering and surveying firms, utility companies, law firms, land development companies, and local, state, federal, and international government agencies.

Since half of its business comes from international clients, CSA's specialists travel the world assessing oil spills, ship groundings and more. Recent projects include rebuilding coral reefs in Qatar, conducting environmental surveys in South Africa and providing fiber optic cable permitting services and environment support for a submarine cable system stretching from the Middle East to North Africa.



Continental Shelf Associates is a Martin County company with years of experience conducting impact assessments and supervising the eventual restoration of natural habitats.

CSA International's marine biologists are also involved in local projects. The company is currently managing Martin County's Oyster Reef Restoration Project, overseeing the restoration of 20 acres of oyster reef in the St. Lucie Estuary and about 3.5 acres in the Northwest Fork of the Loxahatchee River. The total cost of the project is just over \$4 million, which includes extensive mapping of the estuaries, construction of the restoration project and associated research and monitoring. To learn more about the project, go to

www.youtube.com and search “CSA oyster reef.”

CSA International’s CEO Kevin Peterson said that its senior biologists “really helped write the book on some of these topics.” He added that “several have been with the company for 25 years or more and are widely considered to be experts in their field.”

CSA International currently employs around 80 people and recently opened an office in Tampa to better accommodate its west coast and Gulf of Mexico clients. To sustain this growth, Peterson is looking to hire additional marine biologists with Masters’ degrees and diving experience. He’s betting Martin County’s coastal lifestyle will draw top-tier candidates.

“Martin County is a good environment for the people we want to attract,” he said. “Many on our staff love to dive and spend time in the water. For them it’s not just a job—it’s a hobby as well.”